



# GIA<sup>®</sup> GIA Gemological Report

## Sapphire Report

GIA Report 1232815000

January 09, 2026

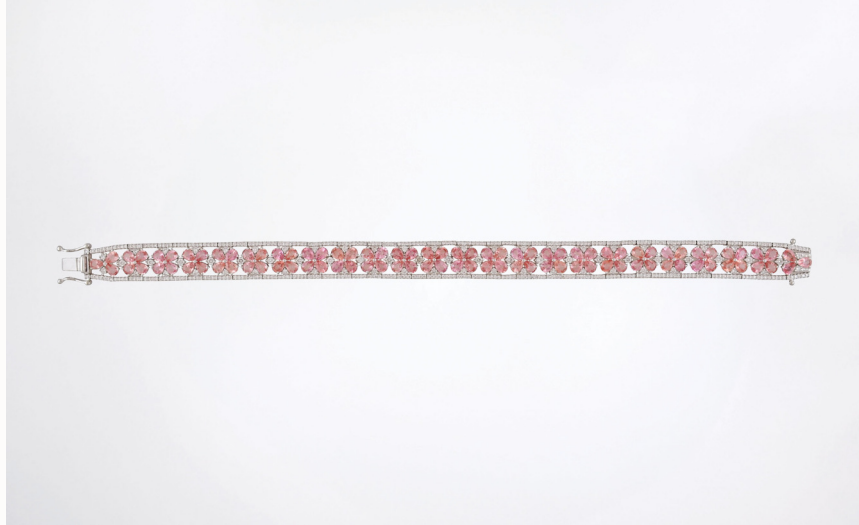


Image is not to scale. Color is approximate.

## Sapphire

Sapphire is mostly thought of as blue in color, however the name refers to every color of the mineral corundum, except red (which is ruby). The name comes from the Greek saphiēros, which means "bright blue stone." Ancient Mediterranean cultures prized sapphire above all other gems. Today, the most highly prized blue sapphire is sourced from Kashmir, India. Other significant sources include Myanmar, Thailand, Sri Lanka, and Madagascar.

## Characteristics

Mineral	Mohs Hardness	Toughness	Birthstone
Corundum	9	Excellent	September

To learn more about how GIA determines and classifies gemstone origin, go to [reportcheck.gia.edu](https://reportcheck.gia.edu) to view this report.



The results documented in this report refer only to the article described, and were obtained using the techniques and equipment used by GIA at the time of examination. This report is not a guarantee or valuation. For additional information and important limitations and disclaimers, please see [www.gia.edu/terms](https://www.gia.edu/terms) or call +1 800 421 7250 or +1 760 603 4500.

©2025 Gemological Institute of America, Inc.

## Details

### Item Description

Three of numerous orange-pink stones set in a white metal bracelet.

### Weight

20.49 grams (gross)

### Measurements

3.83 x 2.85 x 1.41 mm to 3.80 x 2.80 x 1.66 mm

### Shape

Pear

### Color

Orange-Pink

### Transparency

Transparent

### Cutting Style: Crown

Brilliant Cut

### Cutting Style: Pavilion

Step Cut

## Results

### Species

Natural Corundum

### Variety

Sapphire

### Additional Results

Beryllium Diffused

### Comments

This stone passed GIA's color stability test. Only three stones were tested at random.

**FACSIMILE** This is a digital representation of the original GIA Report. This representation might not be accepted in lieu of the original GIA Report in certain circumstances. The original GIA Report includes certain security features which are not reproducible on this facsimile.

